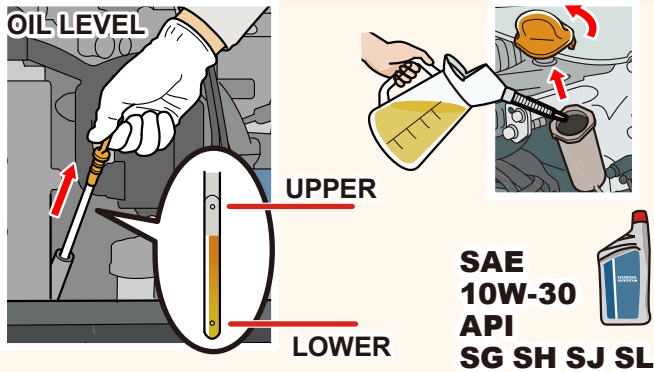




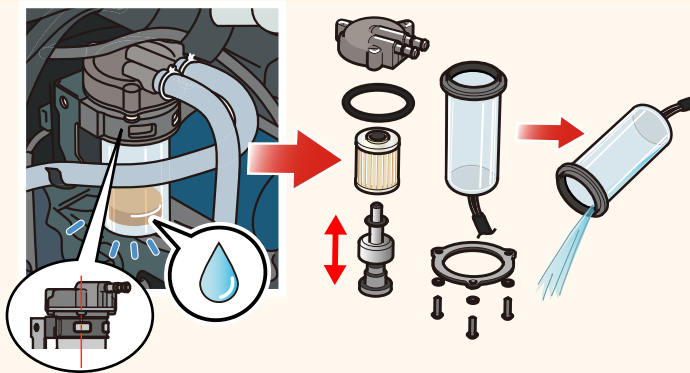
* Read and understand the Owner's Manual before operating the Outboard motor.

Befor Operation Check

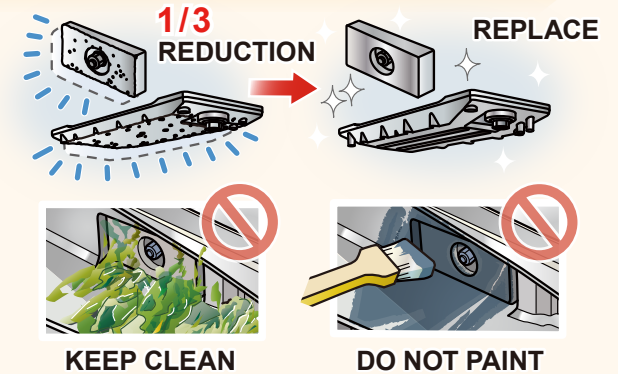
1 Engine Oil



2 Water Separator

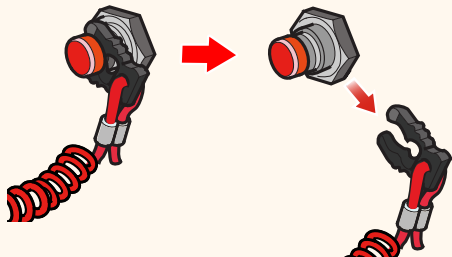


3 Anode Metal

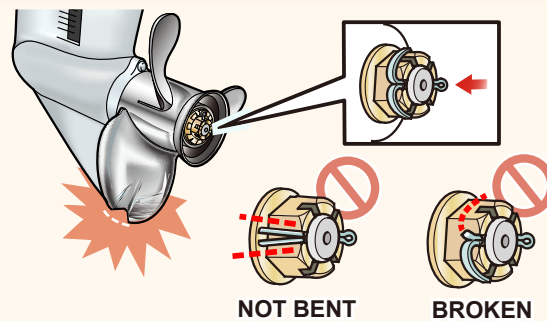


4 Emergency Stop Switch

Make Sure The Engine Stops By Pulling Crip From The Emergency Stop Switch

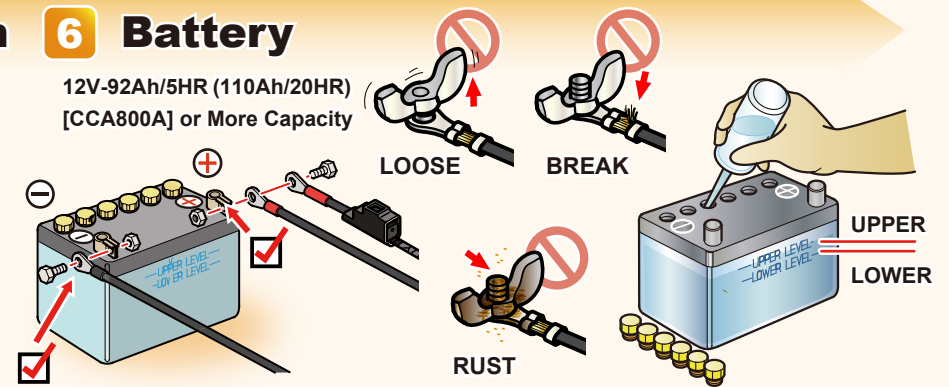


5 Propeller & Cotter Pin



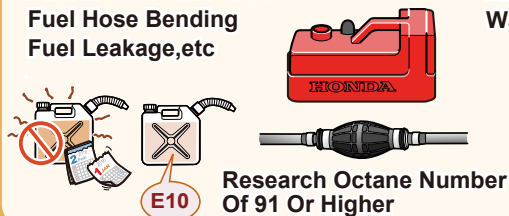
6 Battery

12V-92Ah/5HR (110Ah/20HR)
[CCA800A] or More Capacity



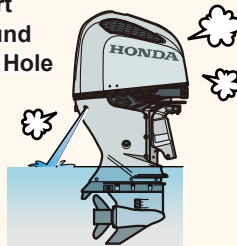
7 Fuel Line

Amount Of Gasoline
Fuel Hose Connection
Fuel Hose Bending
Fuel Leakage, etc



8 Condition

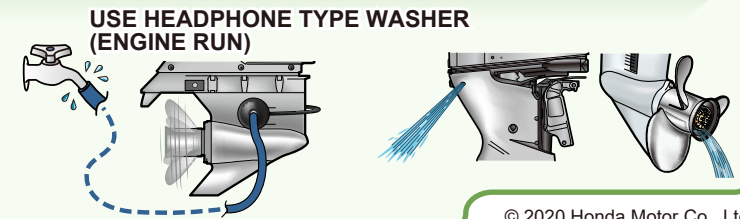
Engine Start
Engine Sound
Water Pilot Hole



After Use

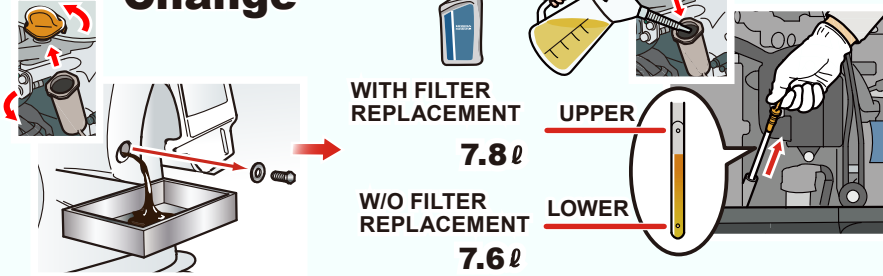
For a long time to use.

- 1 Cool down the engine by idling for few minutes.
- 2 **Flush The Engin For At Least 10minutes**
- 3 Drain the fresh water completely. Do not tiltup the engine soon.

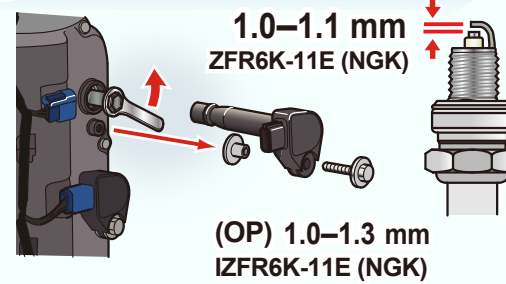




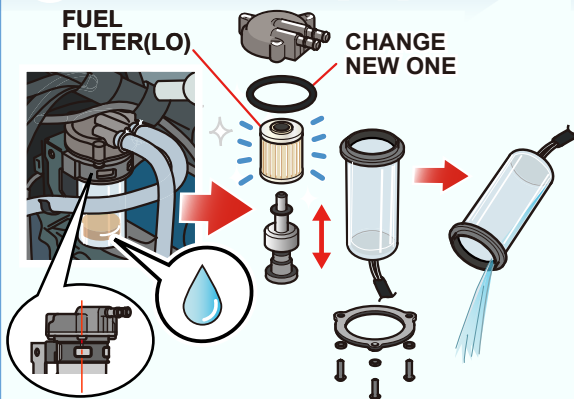
1 Engine Oil Change



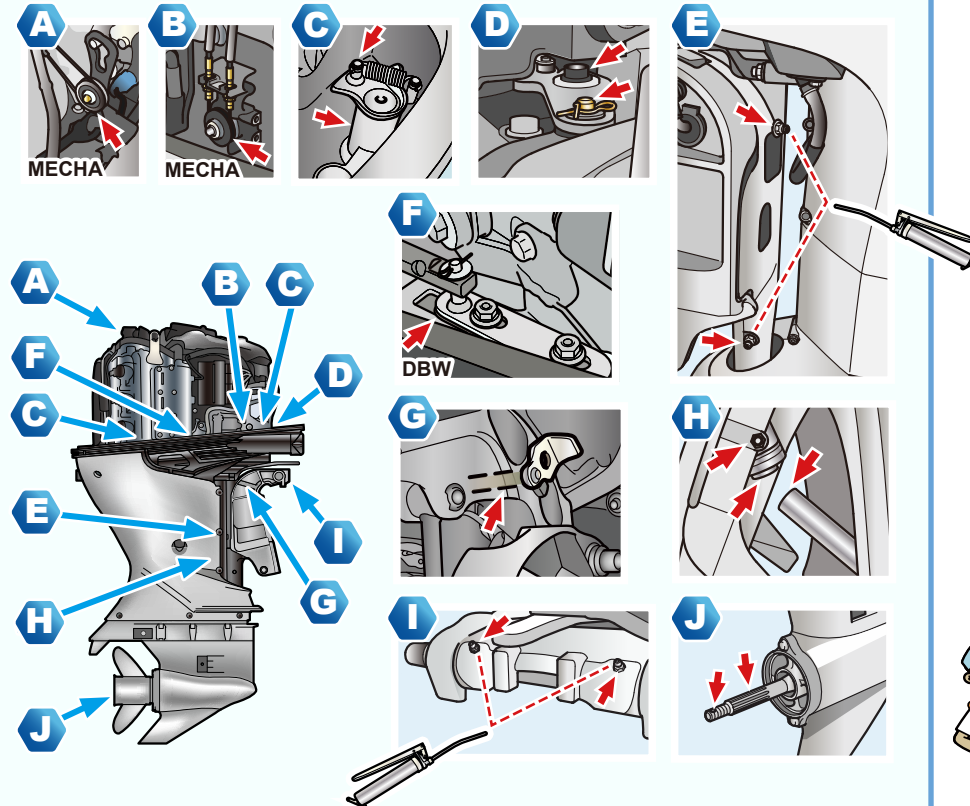
2 Spark Plug



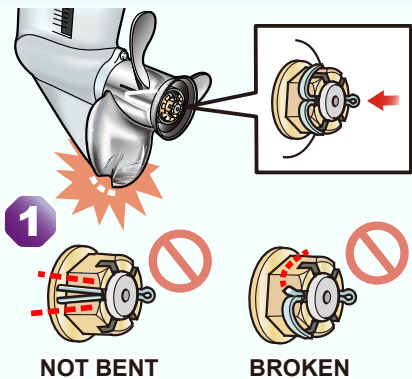
3 Fuel Filter (Lo)



5 Grease



4 Propeller & Cotter Pin



Before Operation
Regular Service

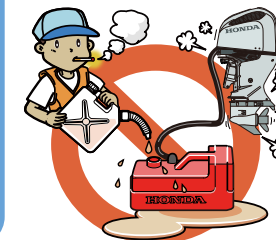
Maintenance Schedule

👁️: Check 🔄: Change 🧽: Clean 🔧: Check-adjust

Regular Service Period	Before each use	First month or 20 Hours	Every 6 months or 100 Hours	Every year or 200 Hours	Every 2 year or 400 Hours
1 1 Engine oil	👁️	🔄	🔄	👁️	🔄
2 2 Spark plug			🔧	👁️ (OP)	🔄 (OP)
2 3 Water separator	👁️		👁️		🔄
3 3 Fuel filter (Lo)	👁️		👁️		
3 4 Anode (Outer)	👁️			👁️	
4 4 Emergency stop switch	👁️				
5 4 Propeller	👁️			👁️	
6 4 Cotter pin	👁️			👁️	
6 5 Battery	👁️				
5 5 Grease		🧽	🧽		
7 7 Fuel line	👁️				

Inspection Items By The Dealer

Inspection Item	Before each use	First month or 20 Hours	Every 6 months or 100 Hours	Every year or 200 Hours	Every 2 year or 400 Hours
Fuel line					👁️ (Every 2 years Replace if necessary)
Spark plug				👁️	🔧 (OP)
Valve clearance				🔧	
Idle speed		🔧	🔧		
Throttle linkage				🔧	
Engine oil filter				🔄	
Breather tube				👁️	
ACG/Timing belt				👁️	
Thermostat				👁️	
Water pump				👁️	
Bolts and nuts		🔧	🔧		
Gear case oil		🔄	🔄		
Fuel filter (Hi)		👁️	👁️	🔄	
Power Trim/Tilt		👁️	👁️		
Shift cable		🔧	🔧		
Anode (Inner)					👁️
Anode (V-bank)					👁️ (Every 6 years or 1200Hours)



To use safely, read the owner's manual before operating the outboard motor.

